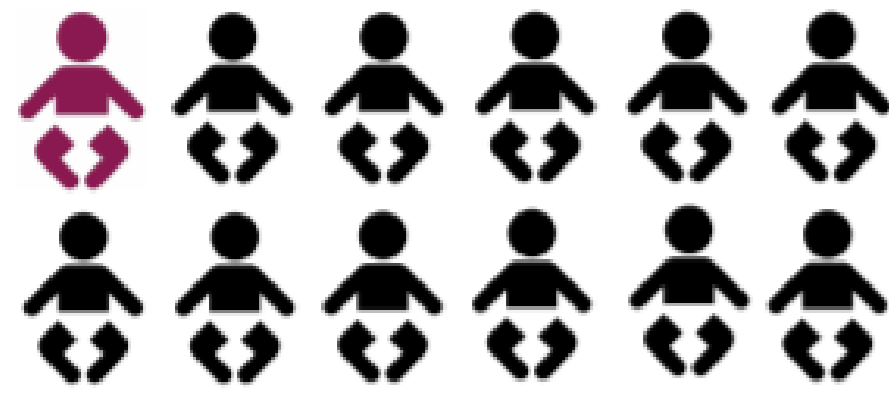




Accelerating Maternal and Newborn Health Gains through Digital Health Innovation in Zanzibar

D-tree International

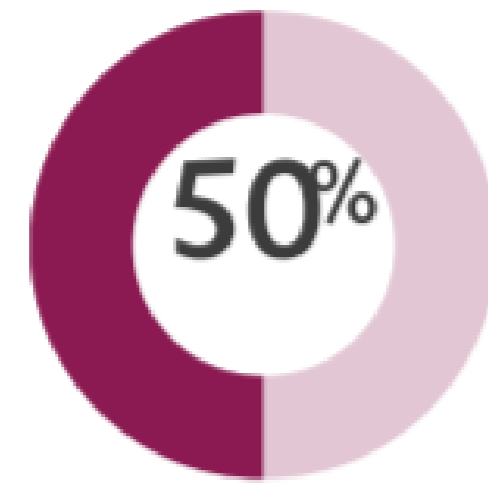
Introduction



1 in 12 infants die within their first year of life

1 in 45

Women die in childbirth over a lifetime



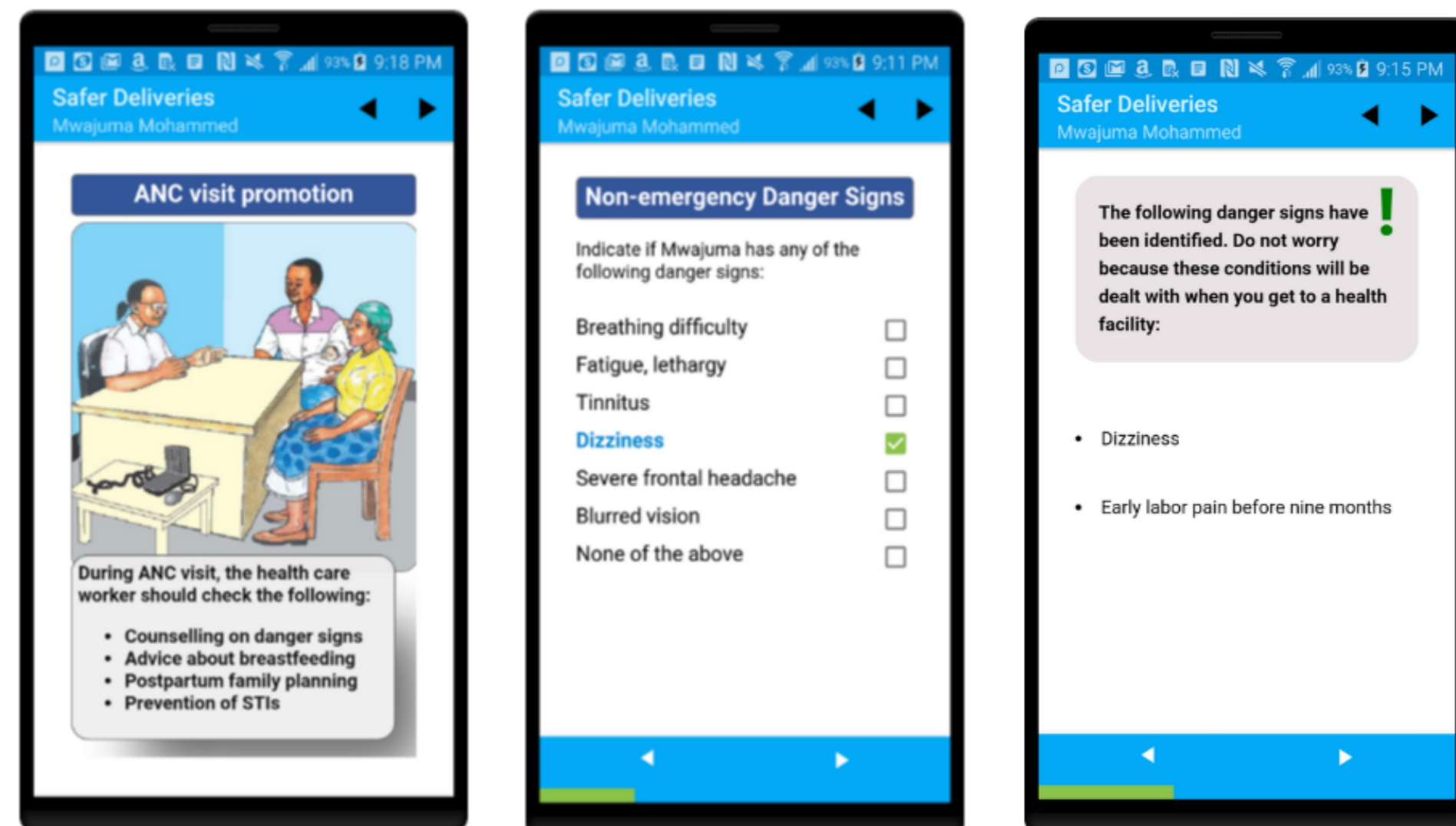
Births take place in the home

98%

Of maternal deaths are preventable

Methods

Since 2011, D-tree has worked in partnership with the Zanzibar Ministry of Health (MOH) to deploy digital innovation to improve access to maternal and newborn care. The program empowers community health volunteers (CHVs) to provide maternal and newborn health services to families, register pregnancies, conduct ANC/PNC visits, and support transportation to health facilities during labor.



Results

The platform has supported more than 70,000 women to deliver safely and has demonstrated positive impacts on the health system, including a 50% increase in facility delivery, a 3-fold increase in referral completion, and 15x increase in CHV performance.

Facility Delivery Rate, 2018 compared to DHS baseline (2015)

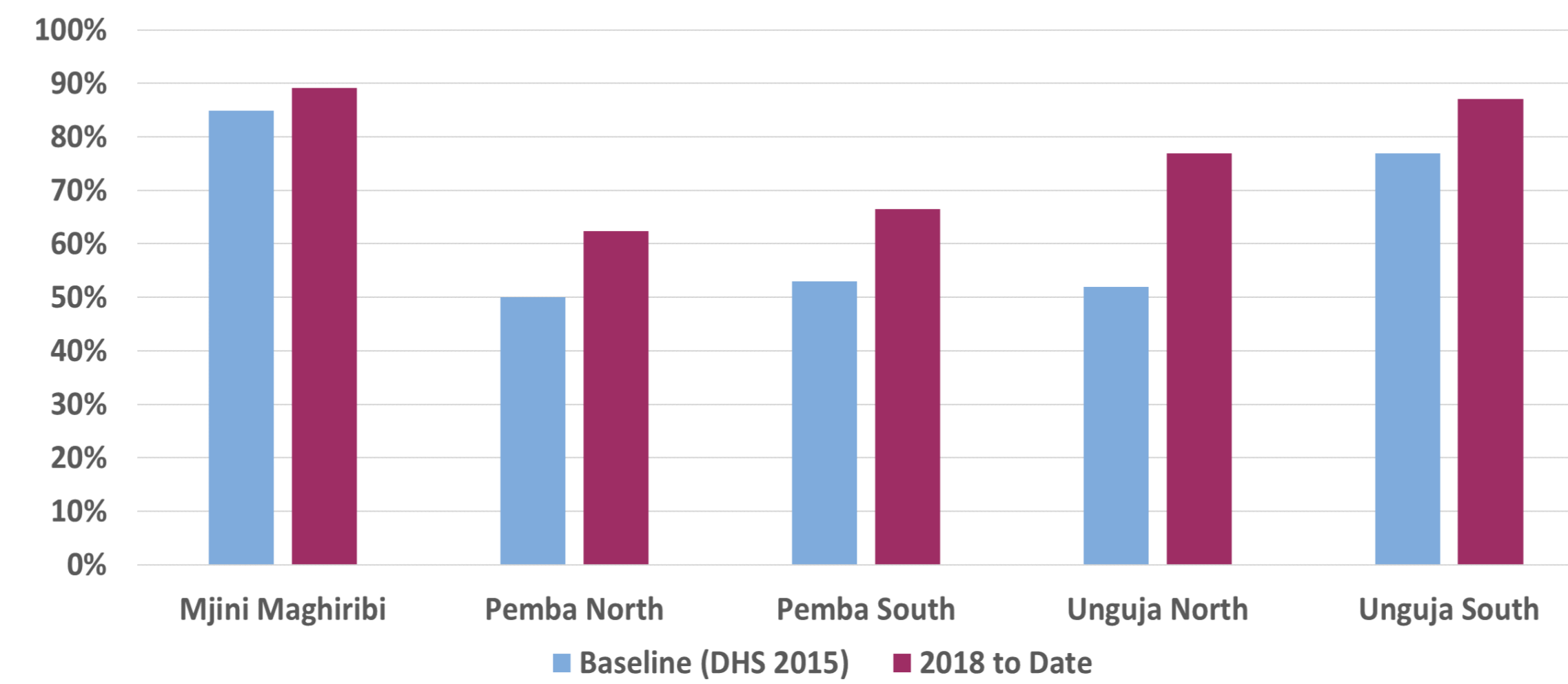
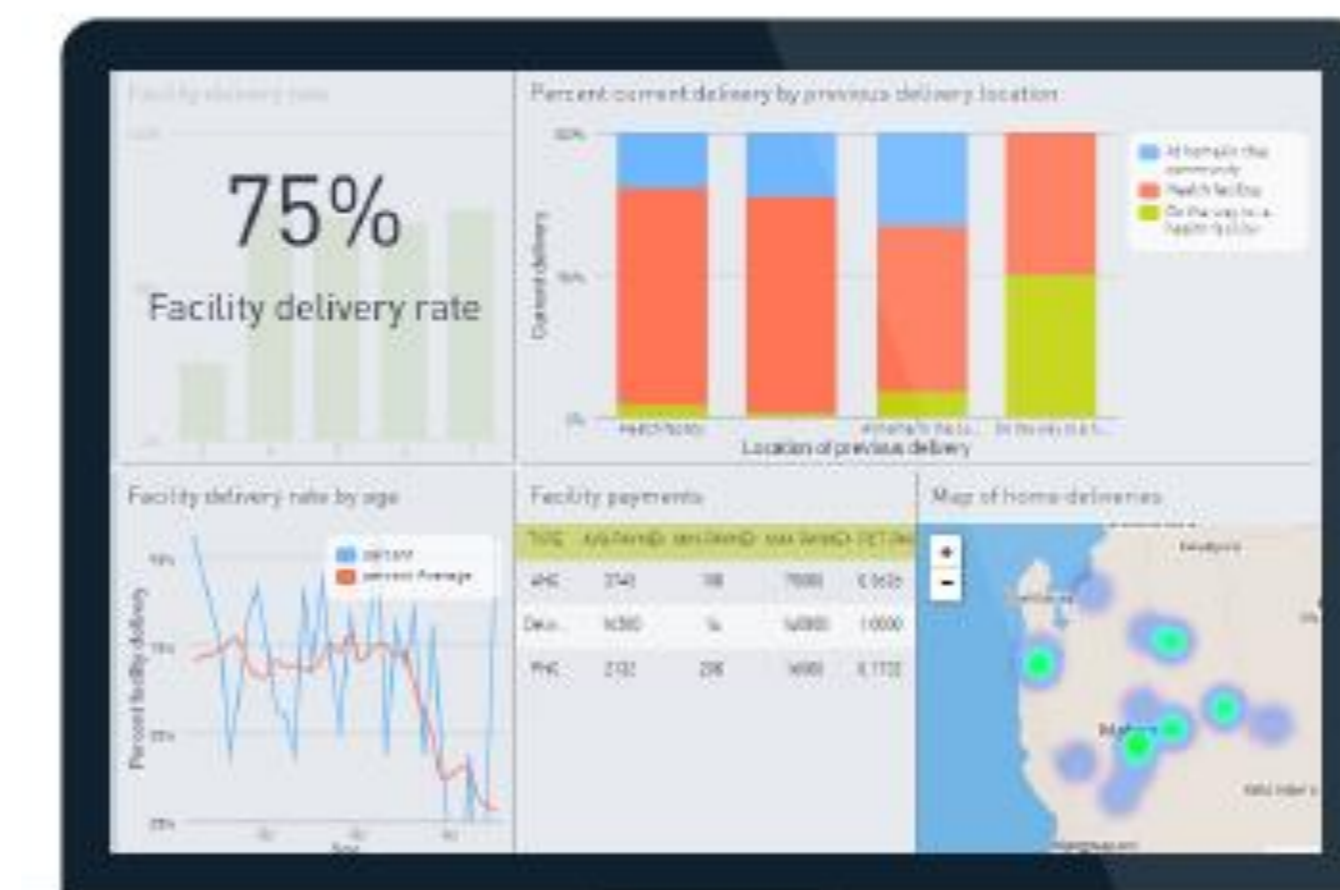


Figure 1. A Community Health Volunteer working with her Supervisor

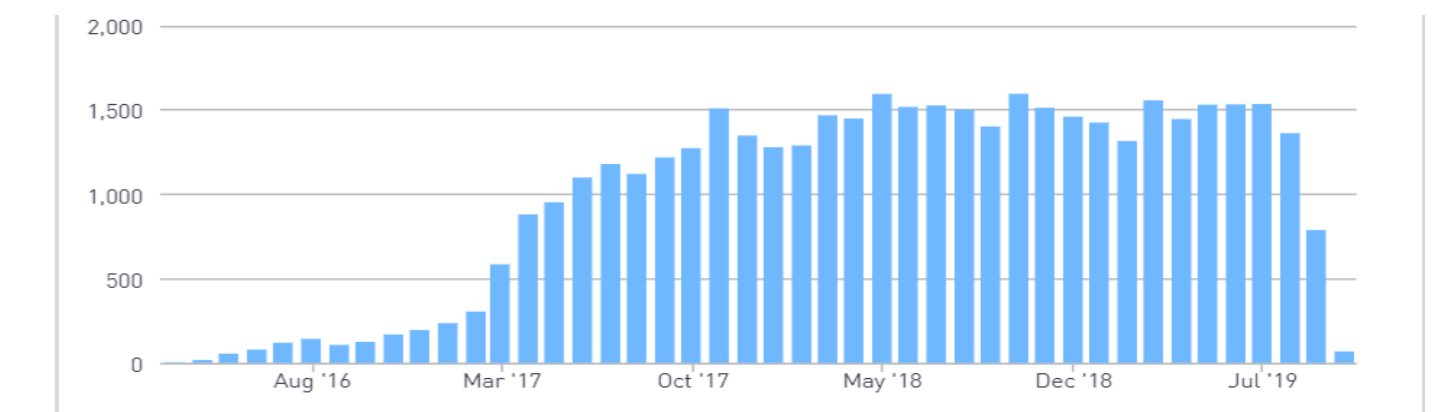


Case management functionality helps CHVs register, track and follow-up with clients at the appropriate time. Longitudinal decision-support guides the CHV step-by-step through a visit, tailoring the content to each client's needs, and ensuring CHVs follow standards-based protocols to deliver high quality care consistent with national guidelines.

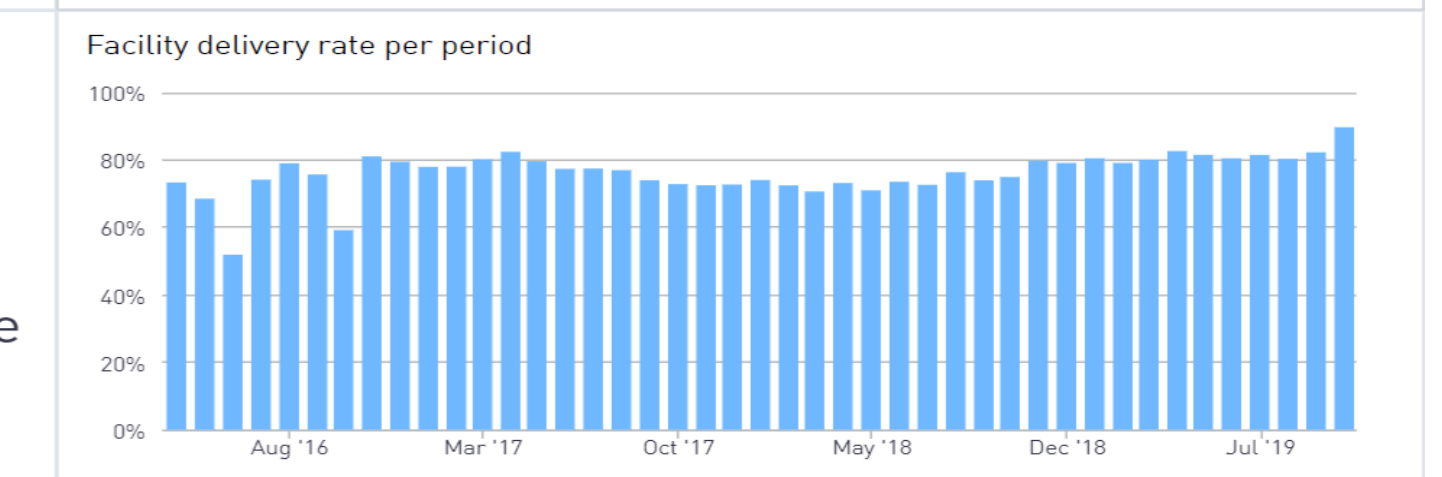
One of the distinguishing aspects of this digital system is that it has been designed to support all health actors engaged in the primary health system. Data generated from CHV/client interactions is routinely collected and made accessible to facility-based supervisors via dashboards which they use to provide real-time monitoring of CHV performance and supportive supervision. Service delivery data is also aggregated and made available to MOH District Health Management teams to use for quality improvement and analysis. D-tree staff work with District Health Officers to navigate the dashboards, analyze data and identify areas for improvement at the district level through quarterly QI action plans.



42.9k
Deliveries



77%
Facility delivery rate



National Expansion

This program has grown from a pilot to a national program, demonstrating how digital technology can transform the quality of an entire health system. The Zanzibar MOH has formally adopted the program and is now scaling it nationally to support comprehensive service delivery for pregnant women and children under 5. D-tree continues to support the MOH to integrate digital health into their Community Health Strategy, design and build the system using an open source platform, integrate data systems with HMIS, and develop scalable models for training, supervision, and routine data collection and use based on global standards.

