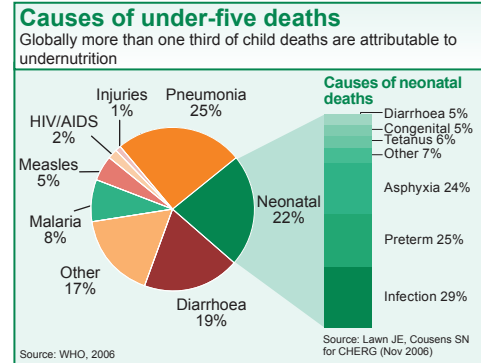
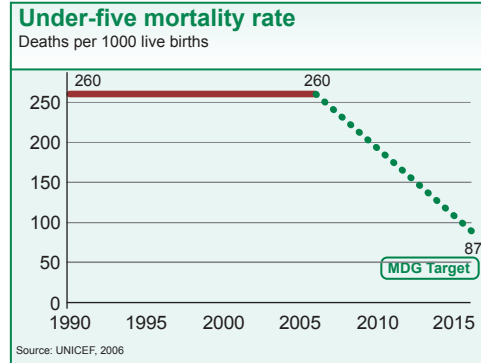




DEMOGRAPHICS

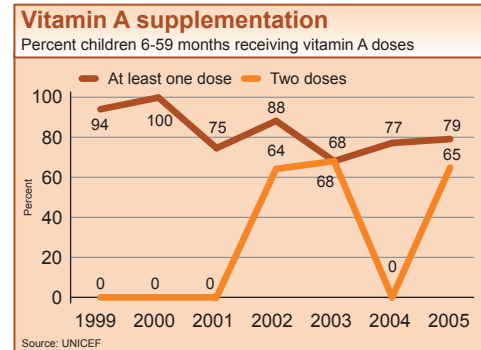
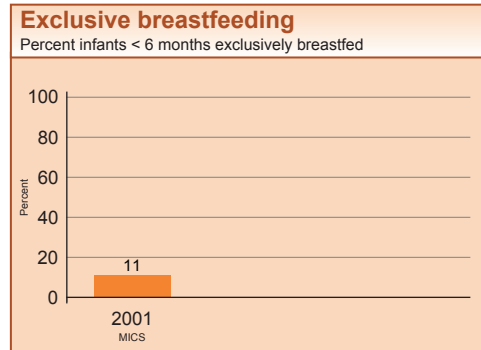
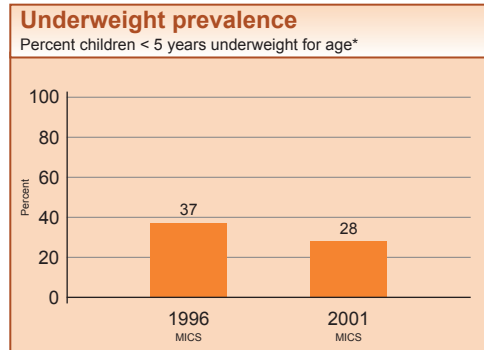
Total population (000)	16,557 (2006)
Total under-five population (000)	3,082 (2006)
Births (000)	792 (2006)
Birth registration (%)	29 (2006)
Under-five mortality rate (per 1000 live births)	260 (2006)
Infant mortality rate (per 1000 live births)	154 (2006)
Neonatal mortality rate (per 1000 live births)	54 (2006)
Total under-five deaths (000)	206 (2006)
Maternal mortality ratio (per 100,000 live births)	1,400 (2005)
Lifetime risk of maternal death (1 in N)	12 (2005)
Total maternal deaths	11,000 (2005)



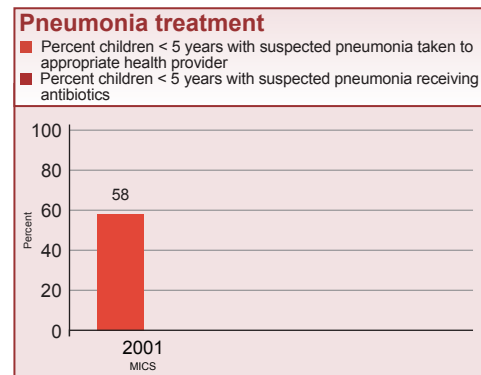
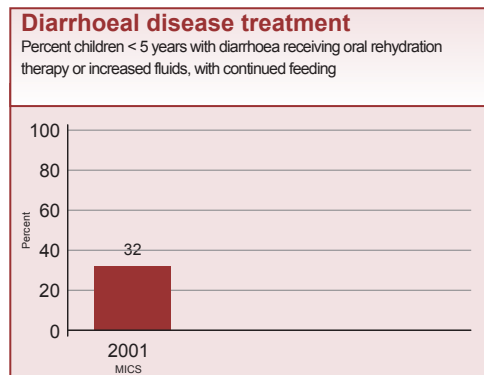
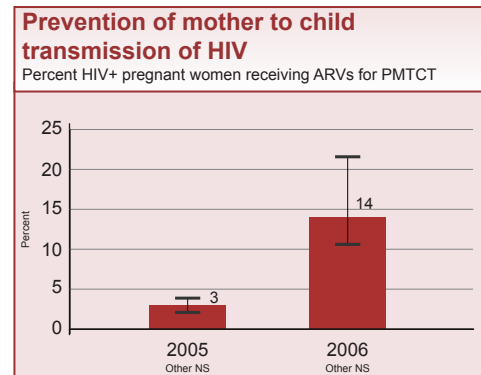
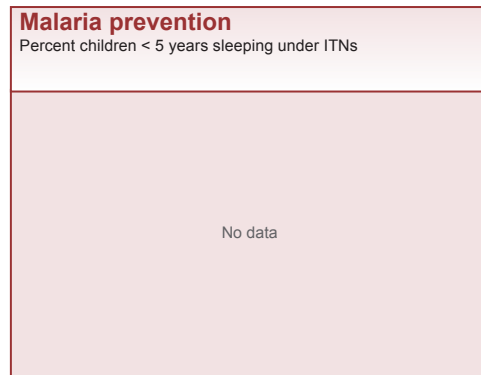
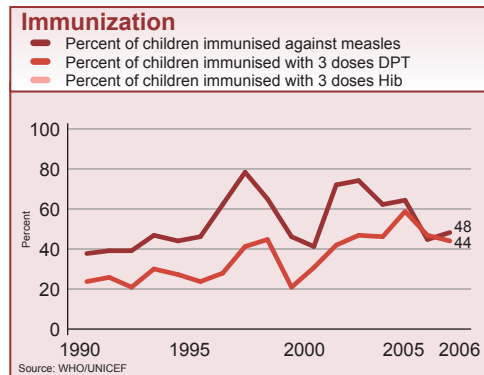
INTERVENTION COVERAGE FOR MOTHERS, NEWBORNS AND CHILDREN

NUTRITION

Stunting prevalence (moderate and severe, %)	51 (2001)	Complementary feeding rate (6-9 months, %)	77 (2001)
Wasting prevalence (moderate and severe, %)	8 (2001)	Low birthweight incidence (%)	12 (2000)

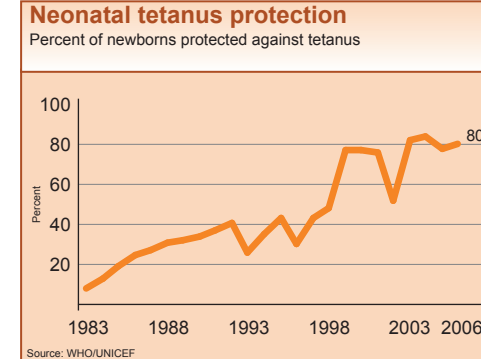
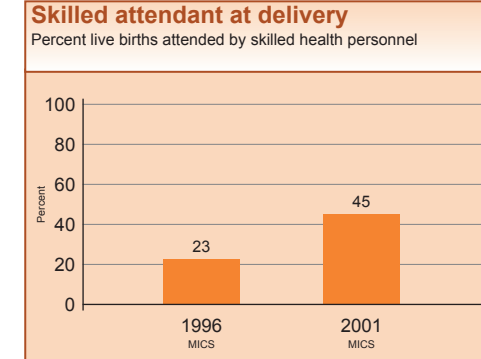
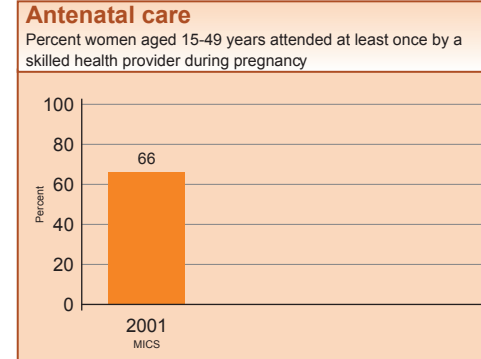
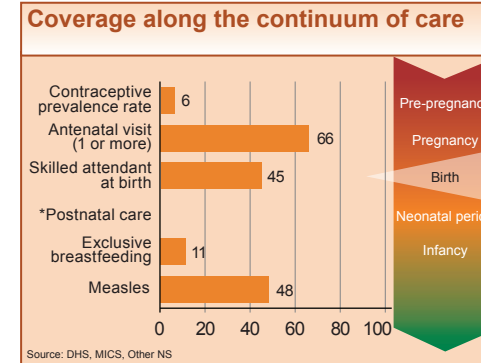
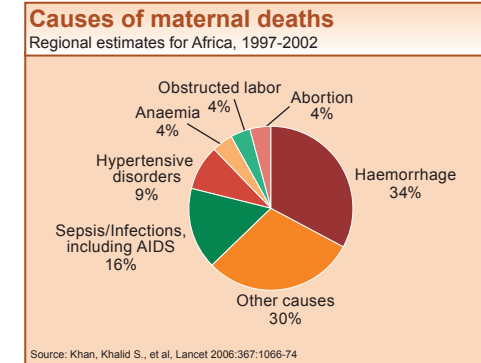


CHILD HEALTH

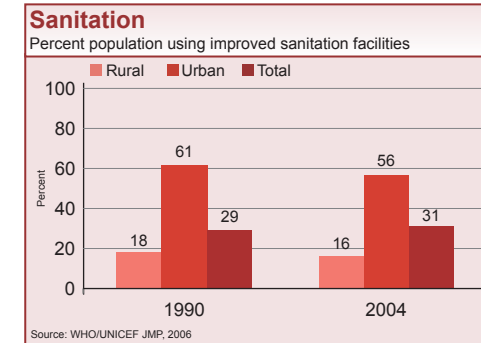
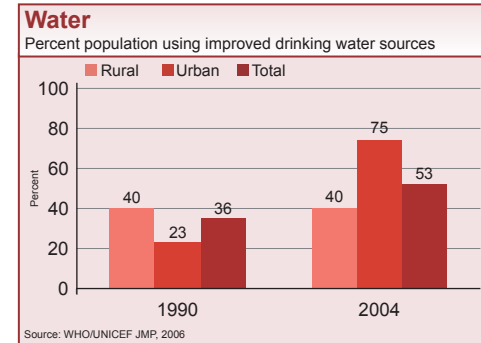


MATERNAL AND NEWBORN HEALTH

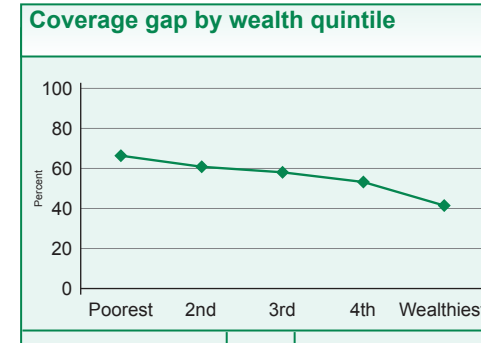
Unmet need for family planning (%)	---
Antenatal visits for woman (4 or more visits, %)	---
Intermittent preventive treatment for malaria (%)	---
C-section rate (total, urban, rural, %)	---
(Minimum target is 5% and maximum target is 15%)	---
Early initiation of breastfeeding (within 1 hr of birth, %)	---
Postnatal visit for baby (within 2 days for home births, %)	---



WATER AND SANITATION



EQUITY



POLICIES

International Code of Marketing of Breastmilk Substitutes	No
New ORS formula and zinc for management of diarrhoea	No
Community treatment of pneumonia with antibiotics	No
IMCI adapted to cover newborns 0-1 week of age	No
Costed implementation plan(s) for maternal, newborn and child health available	Partial
Midwives be authorised to administer a core set of life saving interventions	Yes
Maternity protection in accordance with ILO Convention 183	No
Specific notification of maternal deaths	Yes

SYSTEMS

Financial Flows and Human Resources

Per capita total expenditure on health (US\$)	38 (2007)
General government expenditure on health as % of total government expenditure (%)	4 (2007)
Out-of-pocket expenditure as % of total expenditure on health (%)	21 (2007)
Density of health workers (per 1000 population)	1.4 (2004)
Official Development Assistance to child health per child (US\$)	11 (2005)
Official Development Assistance to maternal and neonatal health per live birth (US\$)	16 (2005)
National availability of Emergency Obstetric Care services (% of recommended minimum)	---

	2001 MICS
Coverage gap (%)	55
Ratio poorest/wealthiest	1.6
Difference poorest-wealthiest (%)	25