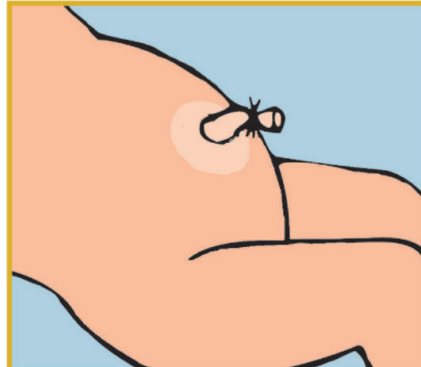


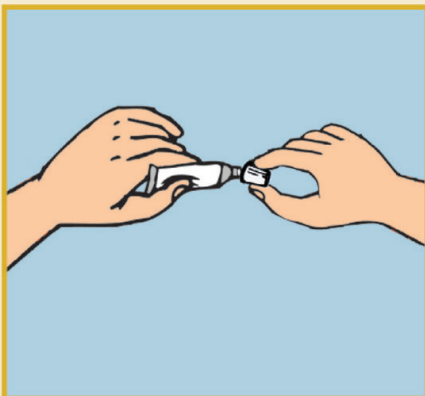


Chlorhexidine Gel (Navi Malam)

Use of Chlorhexidine to prevent infection in newborn



- CHX can prevent cord infection in newborn babies
- Apply CHX immediately after cord cutting
- Single application is adequate
- Use the all gel of the tube



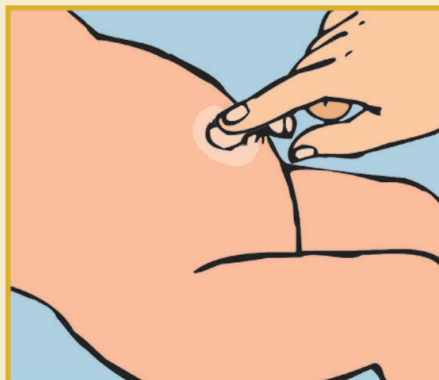
1. Use the sharp protuberance of the lid to break the inner shield of the tube



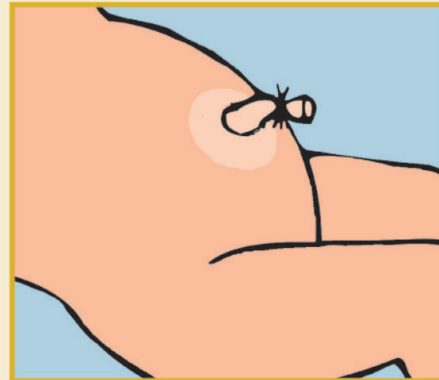
2. Wash hands properly with soap and water before application of CHX



3. Apply CHX gel on the stump and the surrounding areas of the cord



4. Spread the gel gently on the stump and surrounding areas using index finger



5. After applying CHX gel, apply nothing on the cord and keep the cord clean and dry