

Maternal and Newborn Health Disparities

# Guinea-Bissau



© UNICEF/UNI137327/LeMoyné



# Maternal and Newborn Health Disparities in Guinea-Bissau

## Key Facts

### Guinea-Bissau reference table

| Demographic indicators  |      |       |
|---|------|-------|
| Total population (thousands) <sup>1</sup>                                   | 2015 | 1,844 |
| Total live births (thousands) <sup>1</sup>                                  | 2015 | 68    |
| Total Fertility Rate (number of children per woman) <sup>1</sup>            | 2015 | 5     |
| Adolescent birth rate (per 1,000 women 15-19) <sup>10</sup>                 | 2009 | 137   |
| Impact indicators   |      |       |
| Maternal mortality ratio (per 100,000 live births) <sup>4</sup>             | 2015 | 549   |
| Average annual rate of MMR reduction between 1990 and 2015 (%) <sup>5</sup> | 2015 | 2     |
| Lifetime risk of maternal death: 1 in x <sup>4</sup>                        | 2015 | 38    |
| Stillbirth rate (per 1,000 total births) <sup>6</sup>                       | 2015 | 37    |
| Preterm birth rate (per 100 live births) <sup>7</sup>                       | 2010 | 11.2  |
| Under-five mortality rate (per 1,000 live births) <sup>3</sup>              | 2015 | 93    |
| Under-five deaths that are newborn (%) <sup>3</sup>                         | 2015 | 44    |
| Neonatal mortality rate (per 1,000 live births) <sup>3</sup>                | 2015 | 40    |
| Neonatal deaths (thousands) <sup>3</sup>                                    | 2015 | 3     |
| Service Delivery  |      |       |
| Availability of EmONC Services (% of minimum acceptable level) <sup>8</sup> | 2002 | 25    |
| Physician density (per 1,000 population) <sup>9</sup>                       | 2009 | <0.1  |
| Nurse and midwife density (per 1,000 population) <sup>9</sup>               | 2009 | 0.6   |

In 2015, 68,000 babies were born in Guinea-Bissau, or around 190 every day.<sup>1</sup>

Among young women (aged 20-24), 33 percent gave birth by age 18.<sup>2</sup>

Approximately 7 babies will die each day before reaching their first month<sup>3</sup>; 7 stillbirths occur every day.<sup>6</sup>

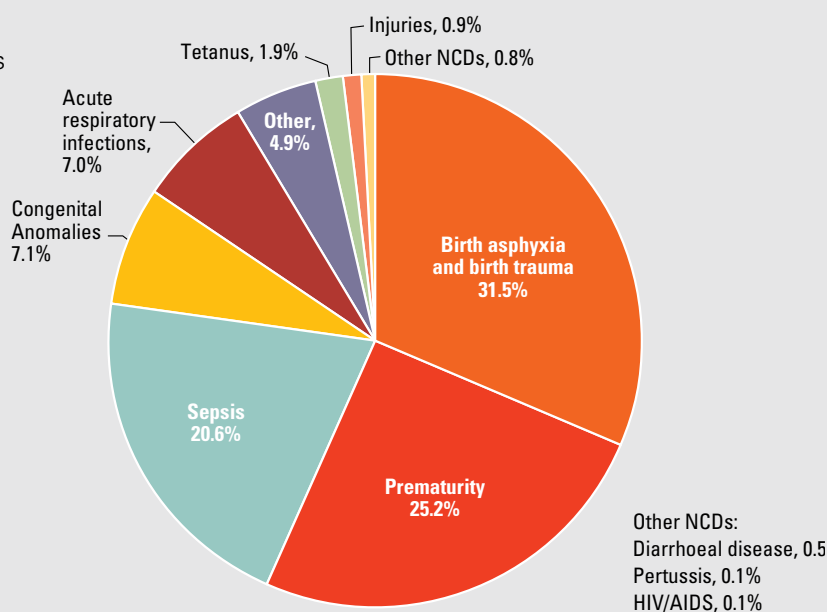
#### Neonatal mortality rate:

Guinea-Bissau's neonatal mortality rate (NMR)<sup>^</sup> is 40 deaths per 1,000 live births.<sup>3</sup>



## Guinea-Bissau — Causes of Neonatal Mortality, 2015

In Guinea-Bissau, the main causes of neonatal deaths in 2015 were birth asphyxia (31.5 percent), prematurity (25.2 percent) and sepsis (20.6 percent).<sup>7</sup>



## Disparities in key maternal and newborn health interventions, Guinea-Bissau, 2010<sup>2</sup>

|  |                     | Coverage – care for mothers            |  |                                |                            |                                    |   |
|--|---------------------|--|--|--------------------------------|----------------------------|------------------------------------|---|
|  |                     | Demand for contraception satisfied (%) | Antenatal care coverage at least 4 times (%) | Skilled attendant at birth (%) | Institutional delivery (%) | Delivered by caesarean section (%) | Postnatal care of mothers within 2 days (%) |
| <b>Residence</b>                             | Urban               | 87.8                                   | 73.7   | 69.4                           | 68.0                       | 4.9                                |   |
|  | Rural               | 94.5                                   | 64.5   | 29.3                           | 27.6                       | 1.0                                |   |
| Residence ratio (urban to rural)             |                     | 0.9                                    | 1.1  | 2.4                            | 2.5                        | 4.9                                |   |
| <b>Household Wealth</b>                      | Richest             | 86.5                                   | 78.1   | 81.6                           | 80.3                       | 6.8                                |   |
|  | Poorest             | 95.0                                   | 61.3   | 22.6                           | 19.7                       | 0.5                                |   |
| Household wealth ratio (richest to poorest)  |                     | 0.9                                    | 1.3  | 3.6                            | 4.1                        | 13.6                               |   |
| <b>Mother's age</b>                          | Less than 20        |  | 65.6   | 52.4                           | 49.9                       | 2.5                                |   |
|  | 20-34               |  | 68.8   | 42.0                           | 40.7                       | 2.1                                |   |
|  | 35-49               |  | 65.0   | 35.7                           | 34.5                       | 3.6                                |   |
| <b>Mother's education</b>                    | No education        | 94.6                                   | 63.7   | 30.4                           | 29.2                       | 1.3                                |   |
|  | Primary             | 86.9                                   | 71.5   | 55.6                           | 53.1                       | 3.9                                |   |
|  | Secondary or higher | 82.8                                   | 80.5   | 83.0                           | 80.7                       | 4.6                                |   |
| Mother's education ratio (highest to lowest) |                     | 0.9                                    | 1.3  | 2.7                            | 2.8                        | 3.5                                |   |

## Maternal and newborn health coverage indicators

### By residence:<sup>2</sup>

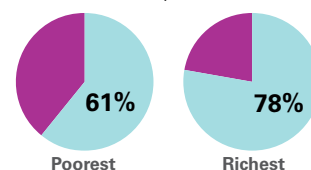
- In rural areas, 65 percent of women made at least 4 antenatal care (ANC) visits compared to 74 percent in urban areas.
- Coverage of skilled attendance at birth is 29 percent in rural areas, compared to 69 percent in urban areas.
- 93 percent of newborns in rural areas received the BCG vaccine, compared to 96 percent in urban areas.

### By household wealth:<sup>2</sup>

- Most mothers among richest households (78 percent) made at least four ANC visits, compared to 61 percent of mothers from the poorest households.
- Only 23 percent of mothers in the poorest households had a skilled attendant at birth, compared to 82 percent of mothers in the richest households.

- Nearly all (99 percent) newborns in the richest households received the BCG vaccination coverage, compared to 93 percent among the poorest households.

**61%** of mothers in the poorest households have **4 Antenatal Care visits** compared to...



...**78%** of mothers in the richest households.

| Coverage – care for newborns                 |                              |                                       |   |                             |                                |                                     |                        | Other                 |
|--|------------------------------|---------------------------------------|---|-----------------------------|--------------------------------|-------------------------------------|------------------------|-----------------------|
| Postnatal care of newborns within 2 days (%) | Newborn weighed at birth (%) | Early initiation of breastfeeding (%) | Exclusive breastfeeding (<6 months) (%) | BCG vaccine for newborn (%) | DPT 1 vaccination received (%) | Tetanus protection for newborns (%) | Birth registration (%) | Births by age 18 (%)# |
|  | 68.7                         | 50.5                                  | 38.3                                    | 96.3                        | 92.5                           | 79.4                                | 29.9                   | 24.1                  |
|  | 34.1                         | 56.7                                  | 38.4                                    | 93.4                        | 94.3                           | 64.7                                | 21.1                   | 42.3                  |
|  | 2.0                          | 0.9                                   | 1.0                                     | 1.0                         | 1.0                            | 1.2                                 | 1.4                    | 0.6                   |
|  | 81.2                         | 51.3                                  | 31.9                                    | 98.9                        | 95.8                           | 87.0                                | 34.5                   | 15.9                  |
|  | 24.7                         | 61.4                                  | 41.6                                    | 92.5                        | 93.1                           | 64.8                                | 17.3                   | 41.5                  |
|  | 3.3                          | 0.8                                   | 0.8                                     | 1.1                         | 1.0                            | 1.3                                 | 2.0                    | 0.4                   |
|  |                              |                                       |   |                             |                                |                                     |                        |                       |
|  |                              |                                       |   |                             |                                |                                     |                        |                       |
|  | 33.4                         | 55.4                                  | 39.4                                    | 93.5                        | 93.0                           | 65.1                                | 21.0                   | 48.2                  |
|  | 59.7                         | 52.2                                  | 35.9                                    | 95.2                        | 94.8                           | 73.5                                | 26.7                   | 34.1                  |
|  | 83.0                         | 55.3                                  | 38.0                                    | 97.7                        | 94.8                           | 86.4                                | 37.3                   | 12.3                  |
|  | 2.5                          | 1.0                                   | 1.0                                     | 1.0                         | 1.0                            | 1.3                                 | 1.8                    | 0.3                   |

Key for tables:

0-24 %

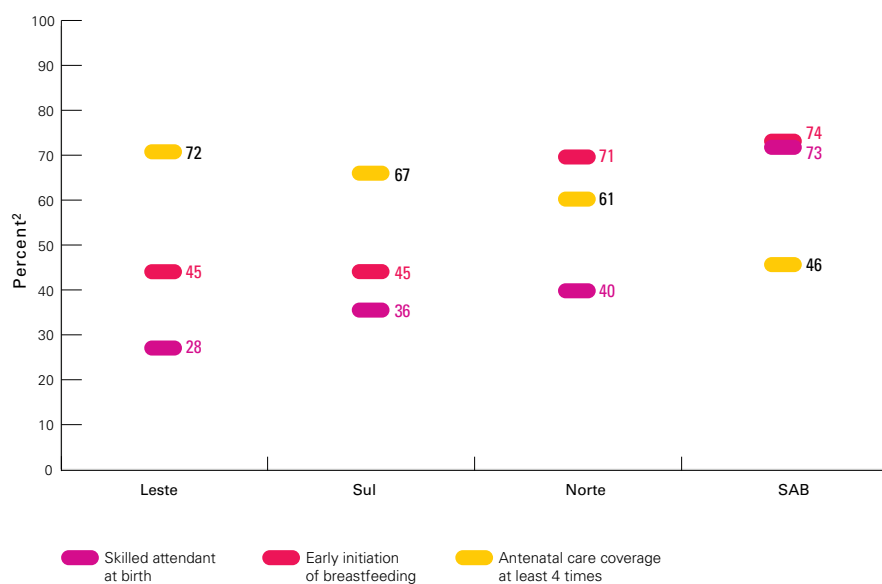
25-49 %

50-74 %

75-100%

Data not available

## Selected maternal and newborn health indicators, by region, 2010



## By mother's age:<sup>2</sup>



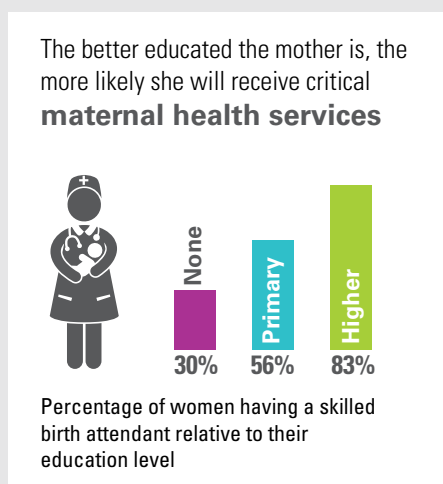
- 69 percent of mothers aged 20-34 made at least four ANC visits, compared to 66 percent among younger mothers (aged less than 20).
- 42 percent of mothers aged 20-34 had a skilled attendant at birth, compared to 52 percent among younger mothers (aged less than 20).

## Disparities in key maternal and newborn health interventions, Guinea-Bissau, 2010<sup>2</sup>

| Coverage – care for mothers |  |  |                                |                            |                                    |   |
|-----------------------------|--|--|--------------------------------|----------------------------|------------------------------------|---|
|                             | Demand for contraception satisfied (%) | Antenatal care coverage at least 4 times (%) | Skilled attendant at birth (%) | Institutional delivery (%) | Delivered by caesarean section (%) | Postnatal care of mothers within 2 days (%) |
| <b>National estimate</b>    | 92.3                                   | 67.6   | 43.0                           | 41.4                       | 2.3                                |   |
| <b>SAB</b>                  | 87.6                                   | 74.2   | 72.7                           | 70.7                       | 6.2                                |   |
| <b>Region</b>               |  |  |                                |                            |                                    |   |
| Leste                       | 94.1                                   | 71.5   | 27.5                           | 27.4                       | 0.9                                |   |
| Norte                       | 93.6                                   | 61.1   | 40.2                           | 37.5                       | 1.4                                |   |
| Sul                         | 92.0                                   | 66.8   | 36.1                           | 34.9                       | 1.6                                |   |
| <b>Regional performance</b> |  |  |                                |                            |                                    |   |
| Highest value               | Leste<br>94.1                          | SAB<br>74.2                                  | SAB<br>72.7                    | SAB<br>70.7                | SAB<br>6.2                         |   |
| Lowest value                | SAB<br>87.6                            | Norte<br>61.1                                | Leste<br>27.5                  | Leste<br>27.4              | Leste<br>0.9                       |   |
| Ratio (highest to lowest)   | 1.1                                    | 1.2  | 2.6                            | 2.6                        | 6.9                                |   |

## By mother's education:<sup>2</sup>

- 81 percent of mothers with a secondary or higher education made at least four ANC visits, compared to only 64 percent of mothers with no education.
- Only 30 percent of mothers with no education had a skilled attendant at birth, compared to 56 percent with primary education and 83 percent for mothers with a secondary or higher education.
- Nearly all (98 percent) newborns born to mothers with a secondary or higher education received the BCG vaccination, compared to 94 percent of newborns born to mothers with no education.



## By geographic region:<sup>2</sup>

- SAB saw the highest rate of antenatal care coverage (at least four visits) of 74 percent, compared to the lowest coverage of 61 percent in Norte.
- The region with the highest coverage of skilled birth attendance is SAB with 73 percent; the lowest coverage is Leste with 28 percent – a difference of 2.6 times.
- SAB saw the highest rate of BCG coverage at 95 percent, compared to the lowest coverage at 93 percent in Sul.

| Coverage – care for newborns                 |                              |                                       |   |                             |                                |                                     |                        | Other                 |
|--|------------------------------|---------------------------------------|---|-----------------------------|--------------------------------|-------------------------------------|------------------------|-----------------------|
| Postnatal care of newborns within 2 days (%) | Newborn weighed at birth (%) | Early initiation of breastfeeding (%) | Exclusive breastfeeding (<6 months) (%) | BCG vaccine for newborn (%) | DPT 1 vaccination received (%) | Tetanus protection for newborns (%) | Birth registration (%) | Births by age 18 (%)# |
|  | 45.9                         | 54.6                                  | 38.3                                    | 94.4                        | 93.7                           | 69.7                                | 24.1                   | 33.0                  |
|  | 76.0                         | 46.4                                  | 39.6                                    | 95.4                        | 91.6                           | 82.9                                | 29.2                   | 20.6                  |
|  | 23.8                         | 44.6                                  | 31.3                                    | 94.6                        | 95.8                           | 66.5                                | 18.9                   | 42.5                  |
|  | 46.1                         | 70.8                                  | 39.3                                    | 94.3                        | 92.6                           | 62.1                                | 27.3                   | 37.8                  |
|  | 44.4                         | 44.7                                  | 49.0                                    | 92.6                        | 95.3                           | 76.5                                | 19.4                   | 38.0                  |
|  | SAB                          | Norte                                 | Sul                                     | SAB                         | Leste                          | SAB                                 | SAB                    | Leste                 |
|  | 76.0                         | 70.8                                  | 49.0                                    | 95.4                        | 95.8                           | 82.9                                | 29.2                   | 42.5                  |
|  | Leste                        | Leste                                 | Leste                                   | Sul                         | SAB                            | Norte                               | Leste                  | SAB                   |
|  | 23.8                         | 44.6                                  | 31.3                                    | 92.6                        | 91.6                           | 62.1                                | 18.9                   | 20.6                  |
|  | 3.2                          | 1.6                                   | 1.6                                     | 1.0                         | 1.0                            | 1.3                                 | 1.5                    | 2.1                   |

Key for tables:

0-24 %

25-49 %

50-74 %

75-100%

Data not available

## Sources:

- 1 United Nations, Department of Economic and Social Affairs, Population Division (2015). World Population Prospects: The 2015 Revision.
- 2 Inquérito aos Indicadores Múltiplos, Inquérito Demográfico de Saúde Reprodutiva - Guiné-Bissau, 2011, Relatório Final.
- 3 United Nations Inter-agency Group for Child Mortality Estimation (UNICEF, WHO, United Nations Population Division and the World Bank).
- 4 United Nations Maternal Mortality Estimation Inter-agency Group (WHO, UNICEF, UNFPA, United Nations Population Division and the World Bank).
- 5 Trends in maternal mortality: 1990 to 2015: estimates by WHO, UNICEF, UNFPA, World Bank Group and the United Nations Population Division.
- 6 Lawn JE, Blencowe H, Waiswa P, et al, for The Lancet Ending Preventable Stillbirths Series study group with The Lancet Stillbirth Epidemiology investigator group. Stillbirths: rates, risk factors, and acceleration towards 2030. Lancet 2016; published online Jan 18. [http://dx.doi.org/10.1016/S0140-6736\(15\)00837-5](http://dx.doi.org/10.1016/S0140-6736(15)00837-5).
- 7 Blencowe H, Cousens S, Oestergaard M, Chou D, Moller AB, Narwal R, Adler A, Garcia CV, Rohde S, Say L, Lawn JE. National, regional and worldwide estimates of preterm birth rates in the year 2010 with time trends since 1990 for selected countries: a systematic analysis and implications. The Lancet, June 9 2012, 379(9832): 2162-72.
- 8 Averting Maternal Death and Disability, United Nations Children's Fund, and United Nations Population Fund special data compilation, 2015.
- 9 Global Health Workforce Statistics database, World Health Organization, Geneva. (<http://www.who.int/hrh/statistics/hwfstats/>).
- 10 United Nations, Department of Economic and Social Affairs, Population Division (2015). 2015 Update for the MDG Database.

## Notes:

- ^ Reference period: five years preceding the survey.
- # Births by age 18 among 20-24 year olds
- () Based on small denominators (typically 25-49 unweighted cases). No data based on fewer than 25 unweighted cases are displayed.